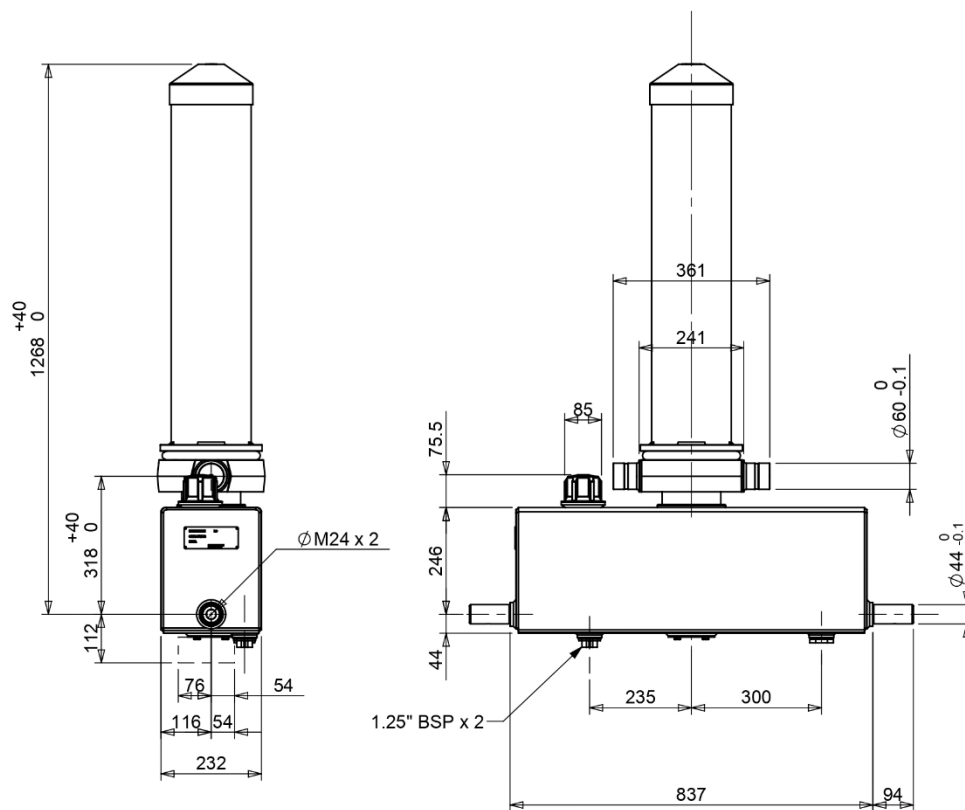


Cylinder 4 stage front end with outer cover

**ALLOW 50mm TO REMOVE CAP FOR SERVICING

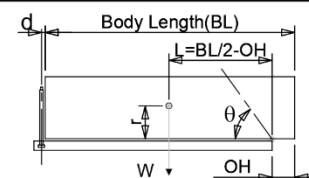


*Includes 14mm Pull Out.

CX1100403871B101

SPECIFICATION		TIPPING CAPACITY : 12-24 TONNES***		
Stage	Diameter	Length	Stroke	Swept Volume
OUTER COVER	184	895	-	-
0	136	1120	-	-
1	117	1140	951	10
2	98	1140	967	7
3	79	1140	972	5
4	63	1140	977	3
Total (+5/-10)			3867	25
Final stroke reduced by	0	Priming Volume	7.3	
Cylinder Mass (Kg)	175	Total Volume (Litres)	32.3	
Maximum Pressure (Bar)	150	Oil Tank Capacity (L)	38	

***TIPPING CAPACITY AT WORKING PRESSURE



BODY LENGTH (BL)						OH
4250		5000		5750		
17	54°	14	45°	12	39	150
24	58°	16	48°	14	41°	450
		21	52°	16	44°	750

d = 0; r = 900; Working Pressure 135 bar

For guidance only;

Higher working pressures and tipping capacities may be possible.
To check your application email - applications@edbro.co.uk

NOTES

1. This cylinder is for lifting purposes only and side load conditions should be avoided
2. Cylinder is painted in primer paint to RAL5013
3. Refer to www.edbro.com for;-
 - Bracket details
 - Installation instructions that must be observed
 - Correct oil selection
 - An explanation of tipping capacity