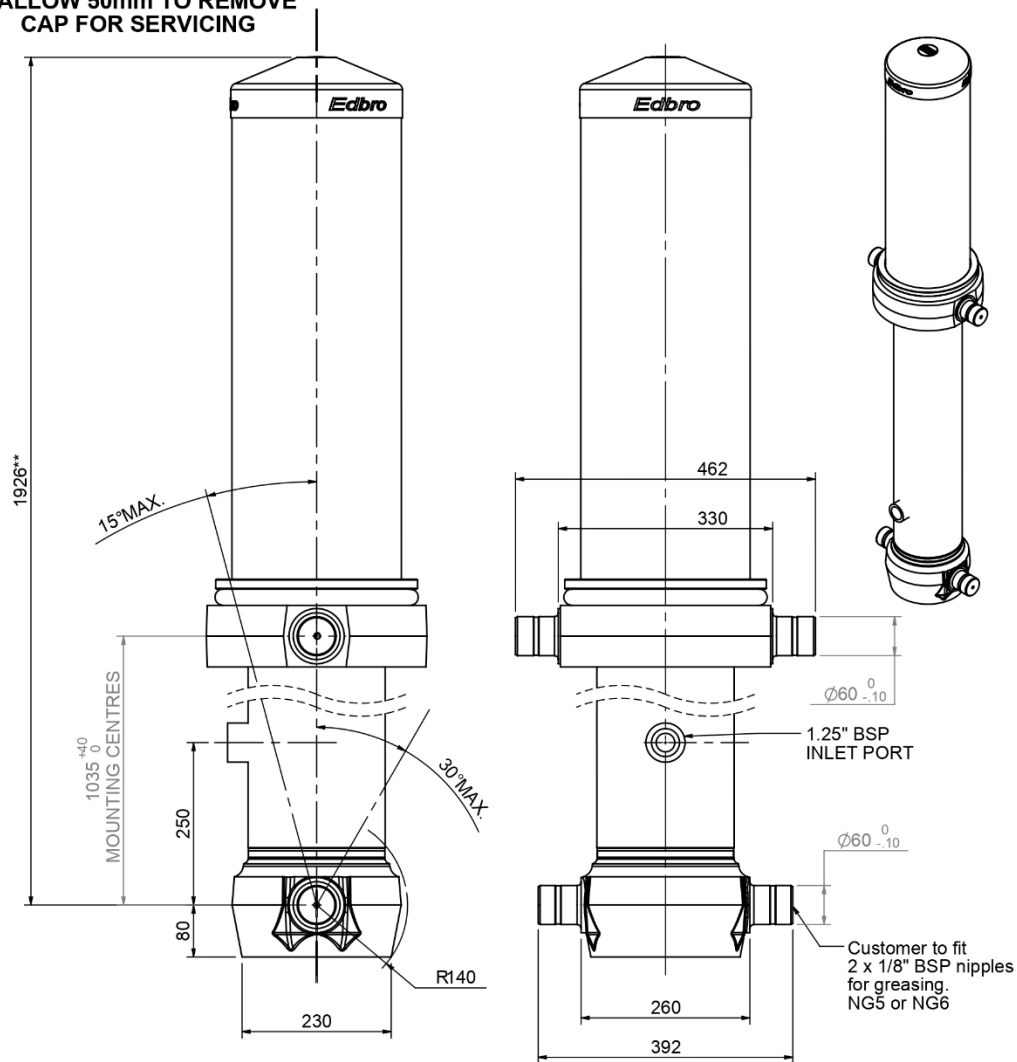


Cylinder 5 stage front end with Outer Cover

****ALLOW 50mm TO REMOVE CAP FOR SERVICING**



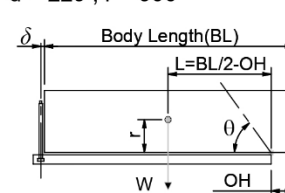
***Includes 12mm Pull Out**

CS180058233B25A15

SPECIFICATION		RATED CAPACITY : 37-49 TONNES***		
Stage	Diameter	Length	Stroke	Swept Volume
OUTER COVER	261	855	-	-
0	211	1875	-	-
1	188	1840	1614	45
2	167	1840	1637	36
3	147	1840	1647	28
4	127	1840	1662	21
5	105	1840	1667	14
Final stroke reduced by	0	Total (+5/-10)	8227	144
Cylinder Mass (Kg)	387.39	Priming Volume		30
Rated Pressure (Bar)	150	Total Volume (Litres)		174
Maximum Pressure (Bar)	175	Max. first stage thrust		260 KN

*****TIPPING CAPACITY AT RATED PRESSURE**

d = 229 ; r = 900



BODY LENGTH (BL)						OH
9500		10000		10500		
41	51°	39	49°	37	46°	150
44	53°	42	50°	40	48°	450
49	55°	45	52°	42	49°	750

Tipping angle (θ)
Body + payload mass, W (tonne)

For guidance only;

Higher Rated Pressures may be possible. To check your application, email Edbro plc at <applications@edbro.co.uk>

NOTES

- If hydraulic pressure is used to limit overloading, the system relief valve must be set to the Rated Pressure unless agreed otherwise by Edbro
- The system relief valve can be set to Maximum Pressure if the load is limited by other means. See RATINGS page for advice
- This cylinder is for lifting purposes only and sideload conditions must be avoided
- Cylinder is painted in primer paint to RAL5013
- See bracket options page BRKT01, BRKT02
- See installation instructions INSTALL01
- Use oil according to specification OIL01