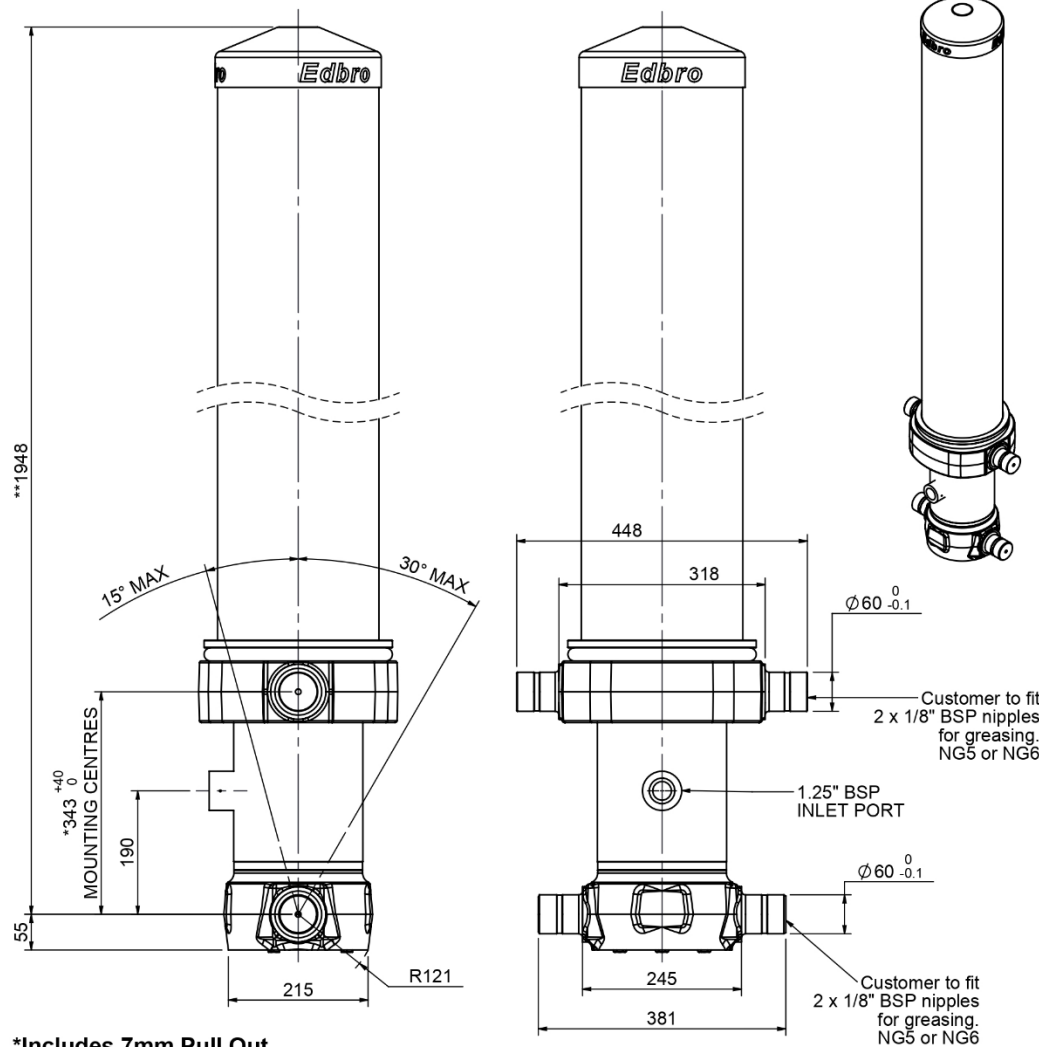


Cylinder 5 stage front end with outer cover

**ALLOW 50mm TO REMOVE CAP FOR SERVICING



*Includes 7mm Pull Out.

CS17L058233B19A11

SPECIFICATION		TIPPING CAPACITY : 32-40 TONNES***		
Stage	Diameter	Length	Stroke	Swept Volume
OUTER COVER	248	1570	-	-
0	199	1875	-	-
1	176	1840	1620	39
2	155	1840	1637	31
3	136	1840	1647	24
4	117	1840	1662	18
5	98	1840	1667	13
Total (+5/-10)			8233	125
Final stroke reduced by	0	Priming Volume	25.3	
Cylinder Mass (Kg)	336	Total Volume (Litres)	150.3	
Maximum Pressure (Bar)	190	Max. first stage thrust	200 KN	

***TIPPING CAPACITY AT WORKING PRESSURE

Body Length (BL)		BODY LENGTH (BL)				OH
d	L=BL/2-OH	10000	10500	11000		
34	48°	33	45°	32	44°	150
37	50°	35	47°	33	45°	450
40	52°	37	49°	35	46°	750

d = 229; r = 900; Working Pressure 150 bar
 Tipping angle (θ)
 Body + payload mass, W (tonne)

For guidance only;
 Higher working pressures and tipping capacities may be possible.
 To check your application email - applications@edbro.co.uk

NOTES

1. This cylinder is for lifting purposes only and side load conditions should be avoided
2. Cylinder is painted in primer paint to RAL5013
3. Refer to www.edbro.com for;-
 - Bracket details
 - Installation instructions that must be observed
 - Correct oil selection
 - An explanation of tipping capacity