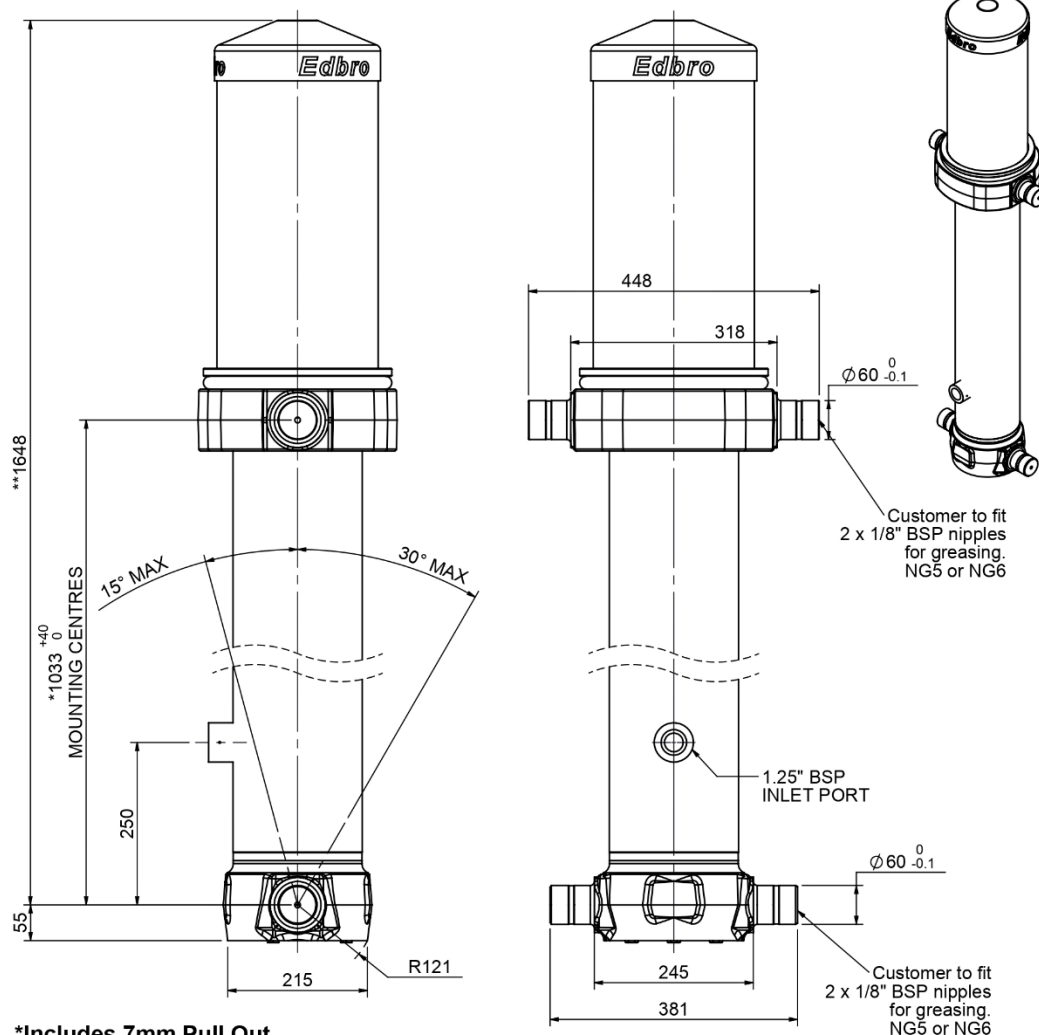


Cylinder 5 stage front end with outer cover

**ALLOW 50mm TO REMOVE CAP FOR SERVICING



*Includes 7mm Pull Out.

CS17L056733B25A15

SPECIFICATION		TIPPING CAPACITY : 33-46 TONNES***		
Stage	Diameter	Length	Stroke	Swept Volume
OUTER COVER	248	580	-	-
0	199	1575	-	-
1	176	1540	1320	32
2	155	1540	1337	25
3	136	1540	1347	20
4	117	1540	1362	15
5	98	1540	1367	10
Total (+5/-10)			6733	102
Final stroke reduced by	0	Priming Volume		20.8
Cylinder Mass (Kg)	269	Total Volume (Litres)		122.8
Maximum Pressure (Bar)	190	Max. first stage thrust		200 KN

***TIPPING CAPACITY AT WORKING PRESSURE

d	BODY LENGTH (BL)						OH
	8000		8500		9000		
37	50°	34	47°	33	44°	150	
40	52°	37	49°	35	46°	450	
46	54°	41	51°	38	47°	750	

$d = 229$; $r = 900$; Working Pressure 150 bar
 Tipping angle (θ)
 Body + payload mass, W (tonne)

For guidance only;
 Higher working pressures and tipping capacities may be possible.
 To check your application email - applications@edbro.co.uk

- NOTES**
- This cylinder is for lifting purposes only and side load conditions should be avoided
 - Cylinder is painted in primer paint to RAL5013
 - Refer to www.edbro.com for;-
 - Bracket details
 - Installation instructions that must be observed
 - Correct oil selection
 - An explanation of tipping capacity