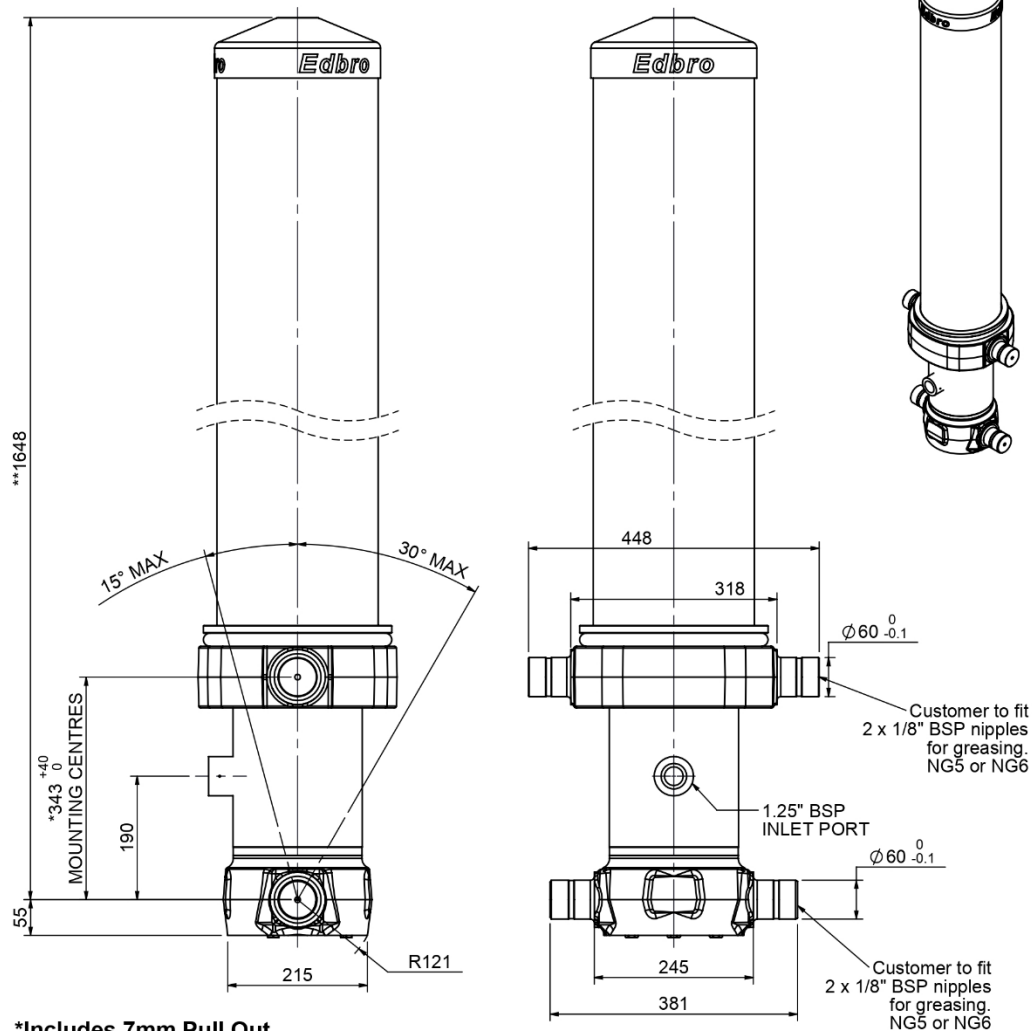


**Cylinder 5 stage front end with outer cover**

\*\*ALLOW 50mm TO REMOVE CAP FOR SERVICING



\*Includes 7mm Pull Out.

**CS17L056733B19A11**

SPECIFICATION		TIPPING CAPACITY : 33-46 TONNES***		
Stage	Diameter	Length	Stroke	Swept Volume
OUTER COVER	248	1270	-	-
0	199	1575	-	-
1	176	1540	1320	32
2	155	1540	1337	25
3	136	1540	1347	20
4	117	1540	1362	15
5	98	1540	1367	10
Total (+5/-10)			6733	102
Final stroke reduced by	0	Priming Volume		20.8
Cylinder Mass (Kg)	286	Total Volume (Litres)		122.8
Maximum Pressure (Bar)	190	Max. first stage thrust		200 KN

**\*\*\*TIPPING CAPACITY AT WORKING PRESSURE**

d	BODY LENGTH (BL)						OH
	8000		8500		9000		
37	49°	35	46°	33	44°	150	
41	52°	38	48°	35	45°	450	
46	54°	42	50°	39	47°	750	

d = 229; r = 900; Working Pressure 150 bar  
 Tipping angle (θ)  
 Body + payload mass, W (tonne)

**For guidance only;**  
 Higher working pressures and tipping capacities may be possible.  
 To check your application email - [applications@edbro.co.uk](mailto:applications@edbro.co.uk)

**NOTES**

1. This cylinder is for lifting purposes only and side load conditions should be avoided
2. Cylinder is painted in primer paint to RAL5013
3. Refer to [www.edbro.com](http://www.edbro.com) for;-
  - Bracket details
  - Installation instructions that must be observed
  - Correct oil selection
  - An explanation of tipping capacity