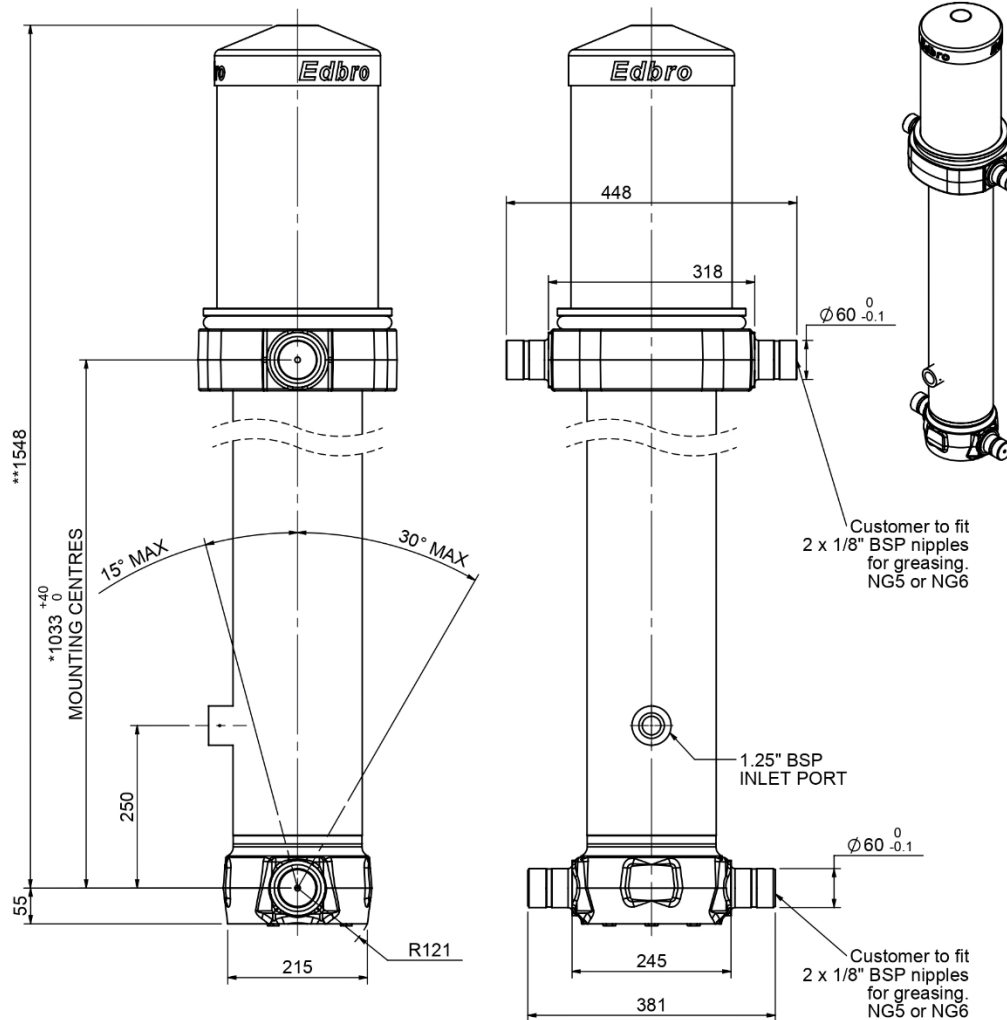


Cylinder 5 stage front end with outer cover

**ALLOW 50mm TO REMOVE CAP FOR SERVICING



*Includes 7mm Pull Out.

CS17L056233B25A15

SPECIFICATION **TIPPING CAPACITY : 33-47 TONNES*****

Stage	Diameter	Length	Stroke	Swept Volume
OUTER COVER	248	480	-	-
0	199	1475	-	-
1	176	1440	1220	30
2	155	1440	1237	23
3	136	1440	1247	18
4	117	1440	1262	14
5	98	1440	1267	10
Total (+5/-10)			6233	95
Final stroke reduced by	0	Priming Volume	19.3	
Cylinder Mass (Kg)	254	Total Volume (Litres)	114.3	
Maximum Pressure (Bar)	190	Max. first stage thrust	200 KN	

*****TIPPING CAPACITY AT WORKING PRESSURE**

Body Length(BL)		BODY LENGTH (BL)					
		7500		8000		8500	
37	49°	34	46°	33	43°	150	
41	51°	38	48°	35	45°	450	
47	54°	42	50°	39	47°	750	

$d = 229$; $r = 900$; Working Pressure 150 bar

For guidance only;
Higher working pressures and tipping capacities may be possible.
To check your application email - applications@edbro.co.uk

NOTES

- This cylinder is for lifting purposes only and side load conditions should be avoided
- Cylinder is painted in primer paint to RAL5013
- Refer to www.edbro.com for;-
 - Bracket details
 - Installation instructions that must be observed
 - Correct oil selection
 - An explanation of tipping capacity