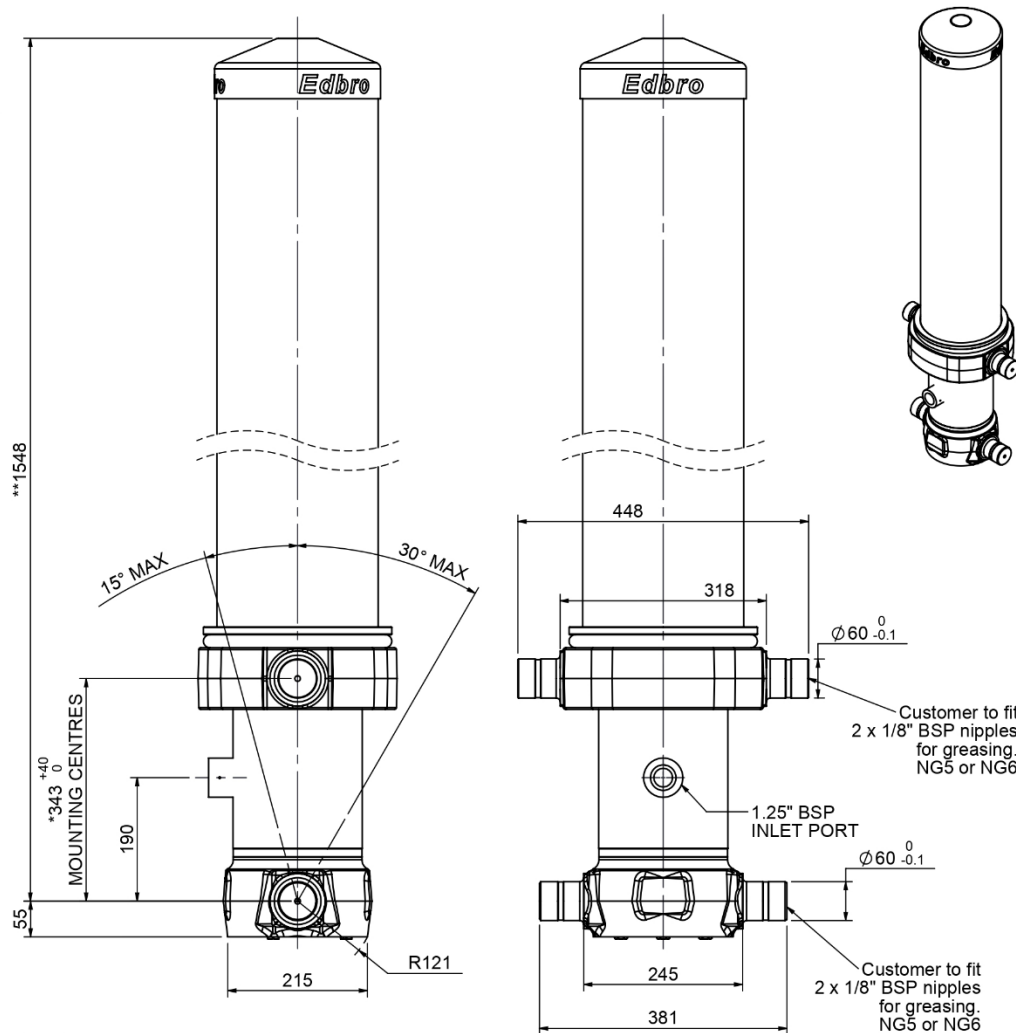


### Cylinder 5 stage front end with outer cover

\*\*ALLOW 50mm TO REMOVE CAP FOR SERVICING



\*Includes 7mm Pull Out.

### CS17L056233B19A11

SPECIFICATION		TIPPING CAPACITY : 33-48 TONNES***		
Stage	Diameter	Length	Stroke	Swept Volume
OUTER COVER	248	1170	-	-
0	199	1475	-	-
1	176	1440	1220	30
2	155	1440	1237	23
3	136	1440	1247	18
4	117	1440	1262	14
5	98	1440	1267	10
Total (+5/-10)			6233	95
Final stroke reduced by	0	Priming Volume	19.3	
Cylinder Mass (Kg)	271	Total Volume (Litres)	114.3	
Maximum Pressure (Bar)	190	Max. first stage thrust	200 KN	

#### \*\*\*TIPPING CAPACITY AT WORKING PRESSURE

		BODY LENGTH (BL)				OH
		7500		8000		
37	49°	35	46°	33	43°	150
42	51°	38	47°	36	44°	450
48	53°	42	50°	39	46°	750

$d = 229$ ;  $r = 900$ ; Working Pressure 150 bar  
 Tipping angle ( $\theta$ )  
 Body + payload mass, W (tonne)

#### For guidance only;

Higher working pressures and tipping capacities may be possible.  
 To check your application email - [applications@edbro.co.uk](mailto:applications@edbro.co.uk)

#### NOTES

- This cylinder is for lifting purposes only and side load conditions should be avoided
- Cylinder is painted in primer paint to RAL5013
- Refer to [www.edbro.com](http://www.edbro.com) for;
  - Bracket details
  - Installation instructions that must be observed
  - Correct oil selection
  - An explanation of tipping capacity