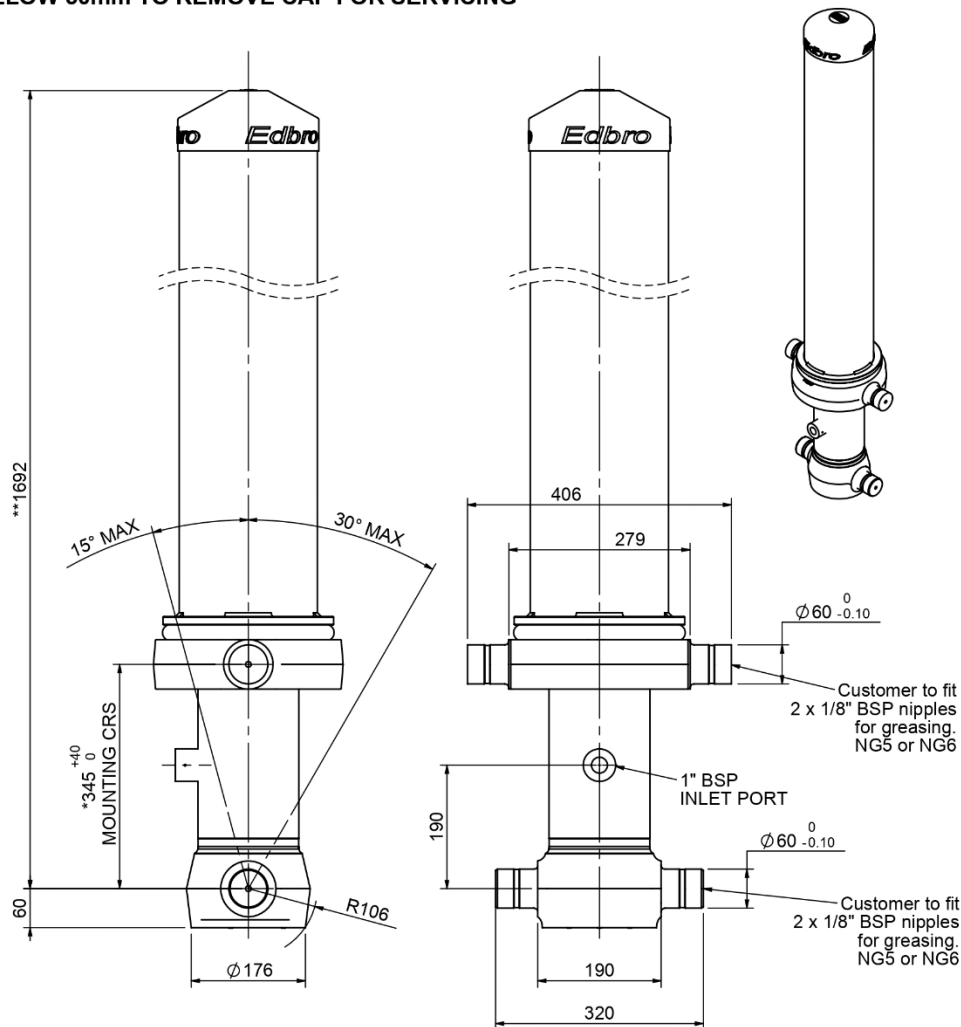


Cylinder 4 stage front end with outer cover

****ALLOW 50mm TO REMOVE CAP FOR SERVICING**

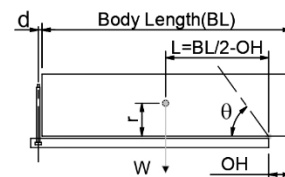


***Includes 14mm Pull Out.**

CS130045641B19A11

SPECIFICATION		TIPPING CAPACITY : 23-32 TONNES***			
Stage	Diameter	Length	Stroke	Swept Volume	
-	-	-	-	-	
OUTER COVER		213	1305	-	-
0	155	1625	-	-	
1	136	1590	1383	20	
2	117	1590	1412	15	
3	98	1590	1417	11	
4	79	1590	1422	7	
Total (+5/-10)			5634	53	
Final stroke reduced by	0	Priming Volume		14	
Cylinder Mass (Kg)	195	Total Volume (Litres)		67	
Maximum Pressure (Bar)	190	Max. first stage thrust		170 KN	

*****TIPPING CAPACITY AT WORKING PRESSURE**



		BODY LENGTH (BL)			OH	
		7000	7500	8000		
26	48°	24	44°	23	41°	150
29	50°	27	46°	25	43°	450
32	52°	29	48°	27	45°	750

$d = 178$; $r = 750$; Working Pressure 175 bar

Tipping angle (θ)
Body + payload mass, W (tonne)

For guidance only;

Higher working pressures and tipping capacities may be possible. To check your application email - applications@edbro.co.uk

NOTES

1. This cylinder is for lifting purposes only and side load conditions should be avoided
2. Cylinder is painted in primer paint to RAL5013
3. Refer to www.edbro.com for;-
 - Bracket details
 - Installation instructions that must be observed
 - Correct oil selection
 - An explanation of tipping capacity