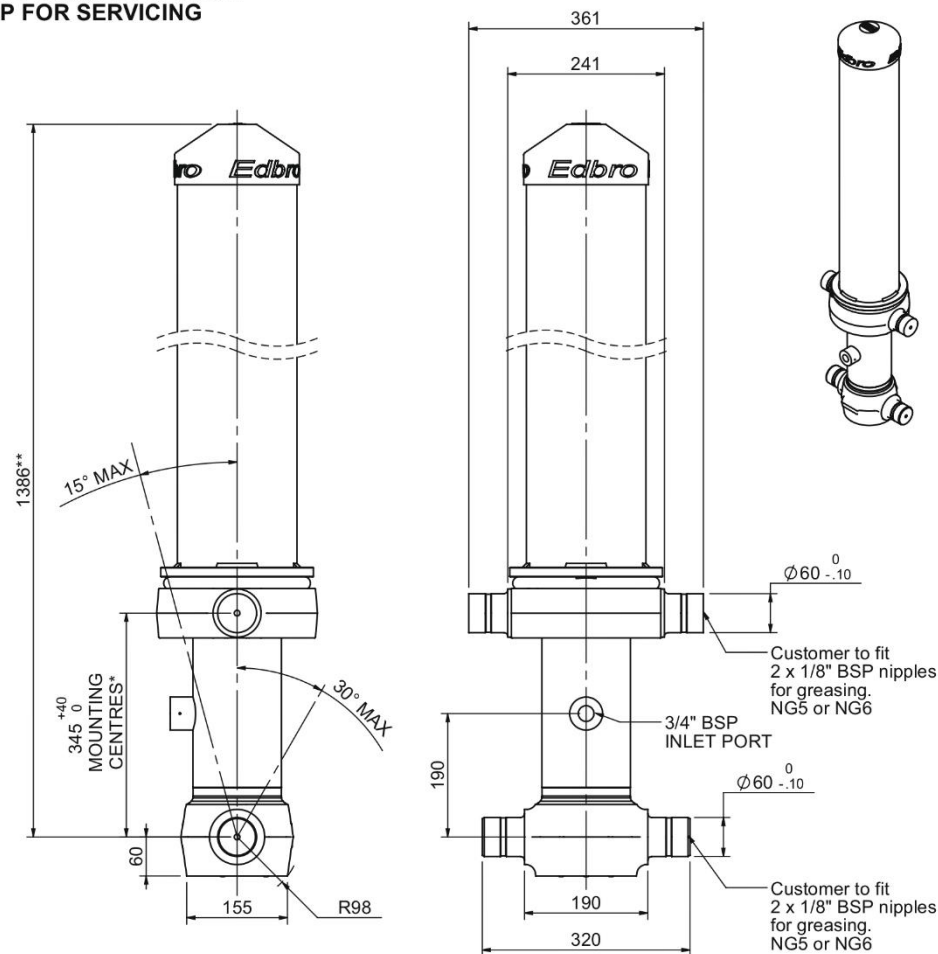


Cylinder 4 stage front end with Outer Cover

****ALLOW 50mm TO REMOVE CAP FOR SERVICING**



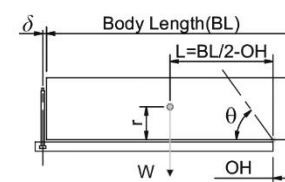
***Include 14mm Pull Out All Stages Chrome Plated**

CS110044471B19A11C

| SPECIFICATION | | RATED CAPACITY : 16-26 TONNES*** | | |
|-------------------------|----------|----------------------------------|--------|--------------|
| Stage | Diameter | Length | Stroke | Swept Volume |
| - | - | - | - | - |
| OUTER COVER | 184 | 990 | - | - |
| 0 | 136 | 1325 | - | - |
| 1 | 117 | 1290 | 1099 | 12 |
| 2 | 98 | 1290 | 1117 | 8 |
| 3 | 79 | 1290 | 1122 | 6 |
| 4 | 63 | 1290 | 1127 | 4 |
| Final stroke reduced by | 0 | Total (+5/-10) | 4465 | 30 |
| Cylinder Mass (Kg) | 119.36 | Priming Volume | 8 | |
| Rated Pressure (Bar) | 175 | Total Volume (Litres) | 38 | |
| Maximum Pressure (Bar) | 175 | Max. first stage thrust | 130 KN | |

*****TIPPING CAPACITY AT RATED PRESSURE**

d = 178 ; r = 750



| BODY LENGTH (BL) | | | | | | OH |
|------------------|-----|------|-----|------|-----|-----|
| 5500 | | 5750 | | 6000 | | |
| 18 | 48° | 17 | 46° | 16 | 44° | 150 |
| 21 | 51° | 19 | 48° | 18 | 46° | 450 |
| 26 | 54° | 23 | 52° | 22 | 49° | 750 |

Tipping angle (θ)
Body + payload mass, W (tonne)

For guidance only;

Higher Rated Pressures may be possible. To check your application, email Edbro plc at <applications@edbro.co.uk>

NOTES

- If hydraulic pressure is used to limit overloading, the system relief valve must be set to the Rated Pressure unless agreed otherwise by Edbro
- The system relief valve can be set to Maximum Pressure if the load is limited by other means. See RATINGS page for advice
- This cylinder is for lifting purposes only and sideload conditions must be avoided
- Cylinder is painted in primer paint to RAL5013
- See bracket options page BRKT01, BRKT02
- See installation instructions INSTALL01
- Use oil according to specification OIL01