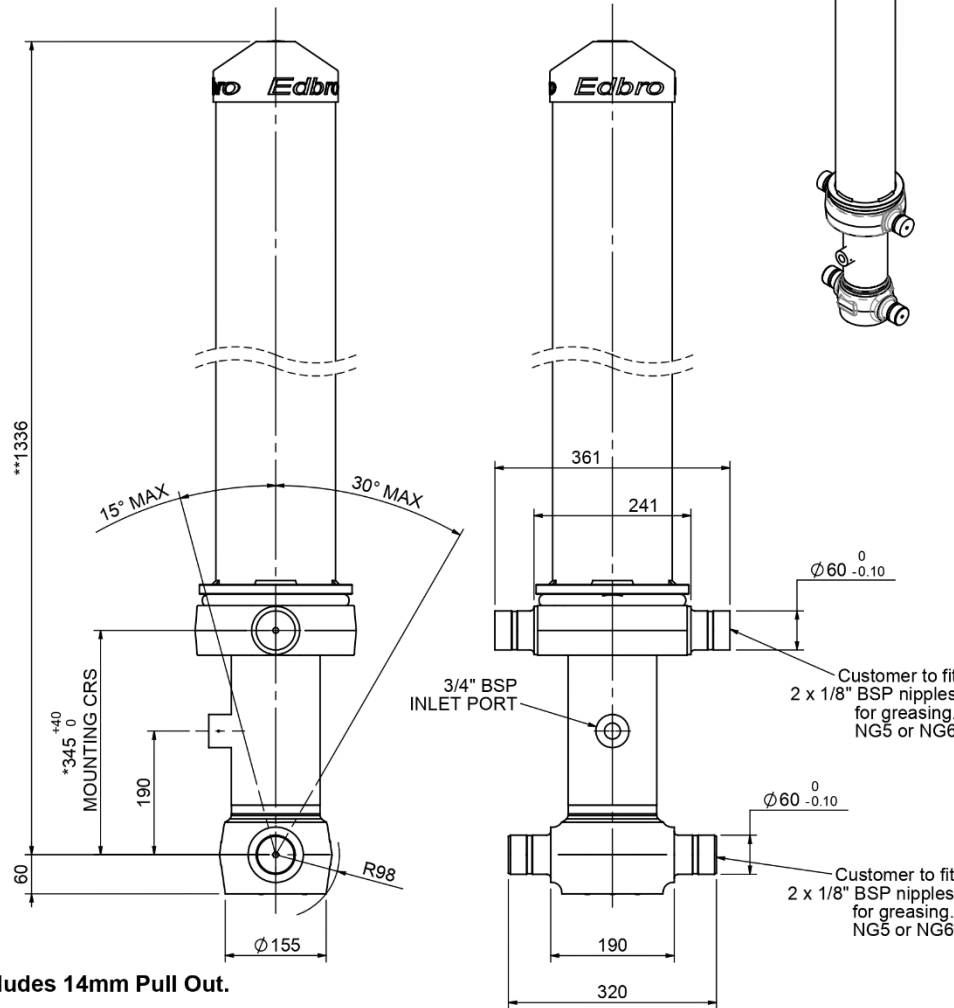


### Cylinder 4 stage front end with outer cover

\*\*ALLOW 50mm TO REMOVE CAP FOR SERVICING

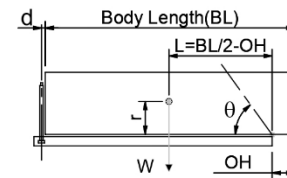


\*Includes 14mm Pull Out.

### CS110044271B19A11

SPECIFICATION		TIPPING CAPACITY : 17-27 TONNES***		
Stage	Diameter	Length	Stroke	Swept Volume
-	-	-	-	-
OUTER COVER	184	940	-	-
0	136	1275	-	-
1	117	1240	1049	11
2	98	1240	1067	8
3	79	1240	1072	5
4	63	1240	1077	3
Total (+5/-10)			4265	27
Final stroke reduced by	0	Priming Volume	8	
Cylinder Mass (Kg)	118	Total Volume (Litres)	35	
Maximum Pressure (Bar)	190	Max. first stage thrust	130 KN	

#### \*\*\*TIPPING CAPACITY AT WORKING PRESSURE



BODY LENGTH (BL)						OH
5250		5500		5750		
18	48°	17	46°	17	44°	150
22	51°	20	49°	19	46°	450
27	55°	24	52°	22	49°	750

d = 178; r = 750; Working Pressure 175 bar

Tipping angle (θ)

Body + payload mass, W (tonne)

#### For guidance only;

Higher working pressures and tipping capacities may be possible.

To check your application email - [applications@edbro.co.uk](mailto:applications@edbro.co.uk)

#### NOTES

- This cylinder is for lifting purposes only and side load conditions should be avoided
- Cylinder is painted in primer paint to RAL5013
- Refer to [www.edbro.com](http://www.edbro.com) for;
  - Bracket details
  - Installation instructions that must be observed
  - Correct oil selection
  - An explanation of tipping capacity