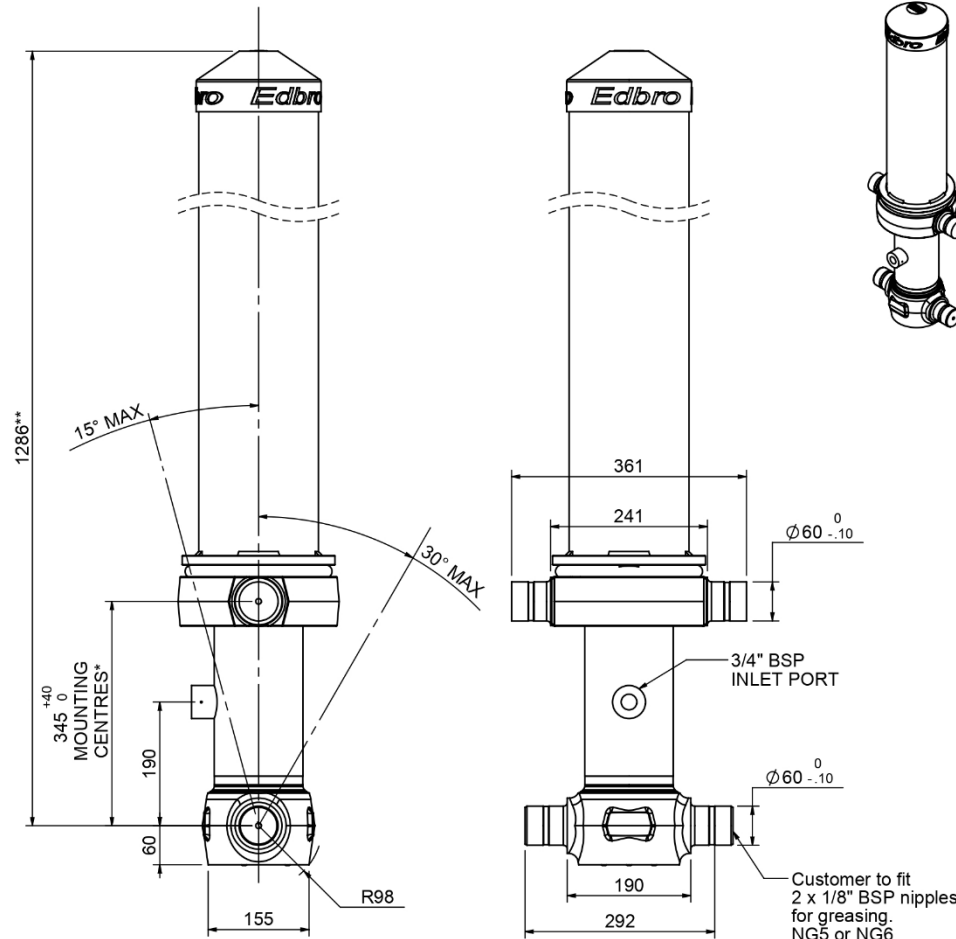


Cylinder 4 stage front end with Outer Cover

****ALLOW 50mm TO REMOVE CAP FOR SERVICING**



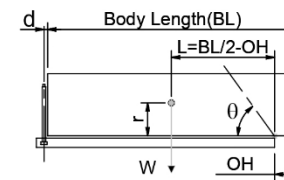
***Include 14mm Pull Out**

CS110044071B19A11

SPECIFICATION		RATED CAPACITY : 17-29 TONNES***		
Stage	Diameter	Length	Stroke	Swept Volume
-	-	-	-	-
OUTER COVER	184	890	-	-
0	136	1225	-	-
1	117	1190	999	11
2	98	1190	1017	8
3	79	1190	1022	5
4	63	1190	1027	3
Final stroke reduced by	0	Total (+5/-10)	4065	27
Cylinder Mass (Kg)	112.10	Priming Volume	7.7	
Rated Pressure (Bar)	175	Total Volume (Litres)	34.7	
Maximum Pressure (Bar)	175	Max. first stage thrust	130 KN	

*****TIPPING CAPACITY AT RATED PRESSURE**

d = 178 ; r = 750



		BODY LENGTH (BL)			
		5000	5250	5500	OH
19	48°	18	46°	17	43° 150
22	51°	21	49°	19	46° 450
29	55°	26	52°	23	49° 750

Tipping angle (θ)
Body + payload mass, W (tonne)

For guidance only;

Higher Rated Pressures may be possible. To check your application, email Edbro plc at <applications@edbro.co.uk>

NOTES

- If hydraulic pressure is used to limit overloading, the system relief valve must be set to the Rated Pressure unless agreed otherwise by Edbro
- The system relief valve can be set to Maximum Pressure if the load is limited by other means. See RATINGS page for advice
- This cylinder is for lifting purposes only and sideload conditions must be avoided
- Cylinder is painted in primer paint to RAL5013
- See bracket options page BRKT01, BRKT02
- See installation instructions INSTALL01
- Use oil according to specification OIL01