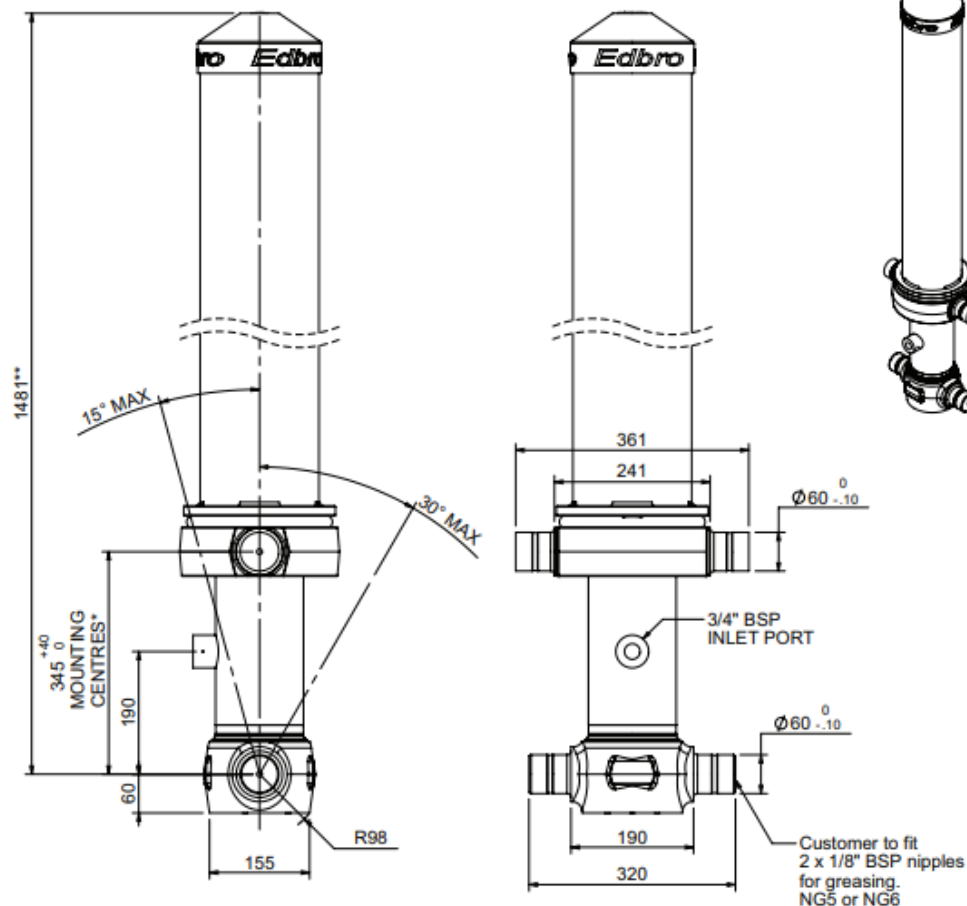


Cylinder 3 stage front end with Outer Cover

****ALLOW 50mm TO REMOVE CAP FOR SERVICING**



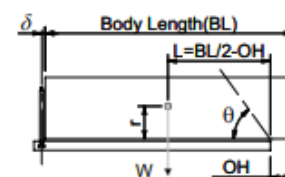
***Include 14mm Pull Out
All Stages Chrome Plated**

CS110033644B19A11C

SPECIFICATION		RATED CAPACITY : 20-32 TONNES***		
Stage	Diameter	Length	Stroke	Swept Volume
-	-	-	-	-
-	-	-	-	-
OUTER COVER	184	1085	-	-
0	136	1425	-	-
1	117	1390	1199	13
2	98	1390	1217	9
3	79	1390	1222	6
Final stroke reduced by	0	Total (+5/-10)	3638	28
Cylinder Mass (Kg)	119.40	Priming Volume		9.5
Rated Pressure (Bar)	150	Total Volume (Litres)		37.5
Maximum Pressure (Bar)	175	Max. first stage thrust	130 KN	

*****TIPPING CAPACITY AT RATED PRESSURE**

d = 178 ; r = 750



		BODY LENGTH (BL)				
		4500	4625	4750	OH	
21	48°	21	46°	20	45°	150
26	51°	25	50°	24	48°	450
		32	54°	30	52°	750

— Tipping angle (θ)
— Body + payload mass, W (tonne)

For guidance only;

Higher Rated Pressures may be possible. To check your application, email Edbro plc at <applications@edbro.co.uk>

NOTES

- If hydraulic pressure is used to limit overloading, the system relief valve must be set to the Rated Pressure unless agreed otherwise by Edbro
- The system relief valve can be set to Maximum Pressure if the load is limited by other means. See RATINGS page for advice
- This cylinder is for lifting purposes only and sideload conditions must be avoided
- Cylinder is painted in primer paint to RAL5013
- See bracket options page BRKT01, BRKT02
- See installation instructions INSTALL01
- Use oil according to specification OIL01