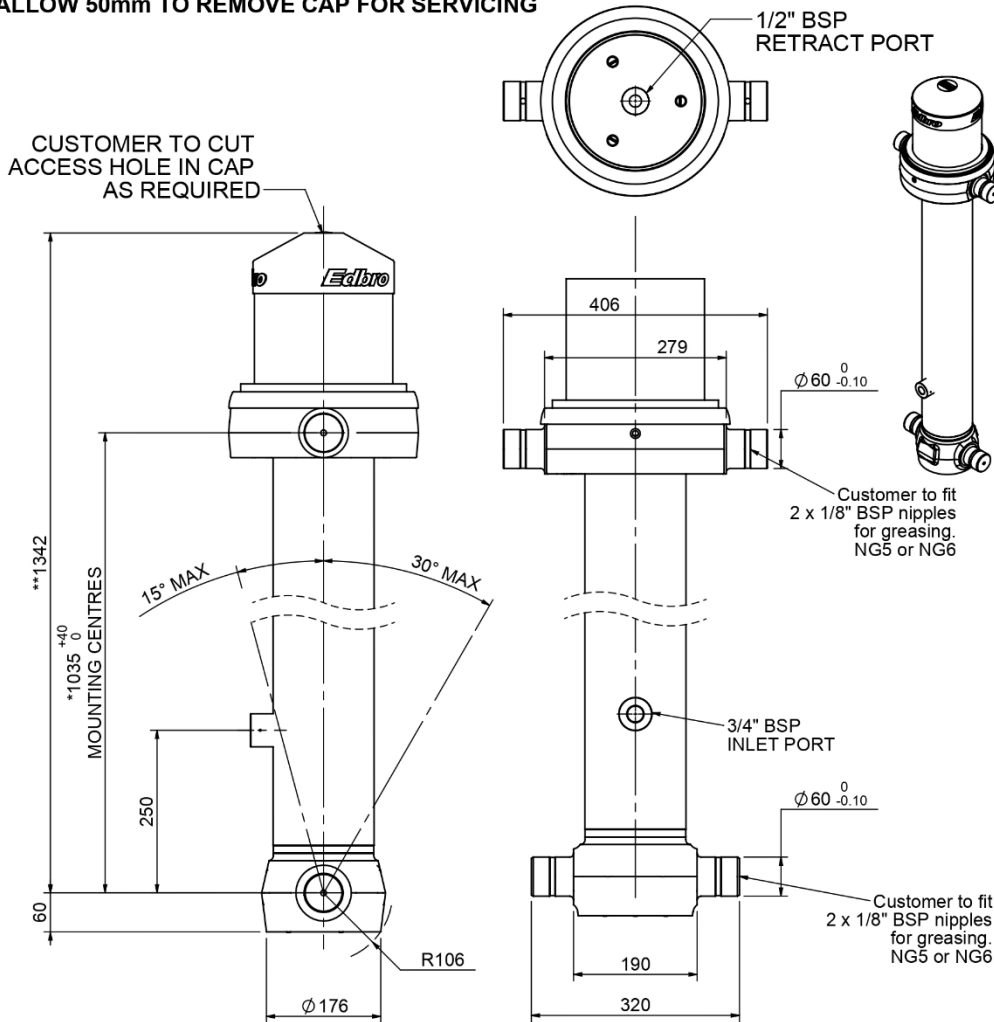


### Cylinder 4 stage with double acting 4th stage

**\*\*ALLOW 50mm TO REMOVE CAP FOR SERVICING**

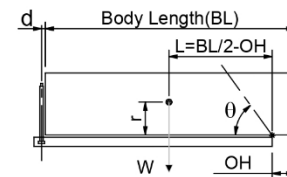


**\*Includes 14mm Pull Out. All Stages Chrome Plated**

### CB130044161B25A15C

SPECIFICATION		TIPPING CAPACITY :23-41 TONNES***		
Stage	Diameter	Length	Stroke	Swept Volume
OUTER COVER	213	265	-	-
0	155	1275	-	-
1	98	1240	1023	8
2	117	1240	1082	12
3	136	1240	1077	16
4R	125	1240	979	-
4	79	1240	979	5
Total (+5/-10)			4161	41
Final stroke reduced by	0	Priming Volume		10
Cylinder Mass (Kg)	149	Total Volume (Litres)		51
Maximum Pressure (Bar)	150	Max. first stage thrust		170 KN

**\*\*\*TIPPING CAPACITY AT WORKING PRESSURE**



BODY LENGTH (BL)						OH
5250		5500		5750		
26	48°	24	46°	23	44°	150
31	51°	29	49°	27	46°	450
41	55°	36	52	32	49°	750

d = 178; r = 750; Working Pressure 150 bar

← Tipping angle ( $\theta$ )  
← Body + payload mass, W (tonne)

Retract force @ Stage 4 = 15.65kN @150bar maximum pressure

**NOTES**

- This cylinder is for lifting purposes only and side load conditions should be avoided
- Cylinder is painted in primer paint to RAL5013
- Refer to [www.edbro.com](http://www.edbro.com) for;-
  - Bracket details
  - Installation instructions that must be observed
  - Correct oil selection
  - An explanation of tipping capacity
- This cylinder is typically for intermittent use in vacuum tanker applications. Refer to Edbro for other uses.