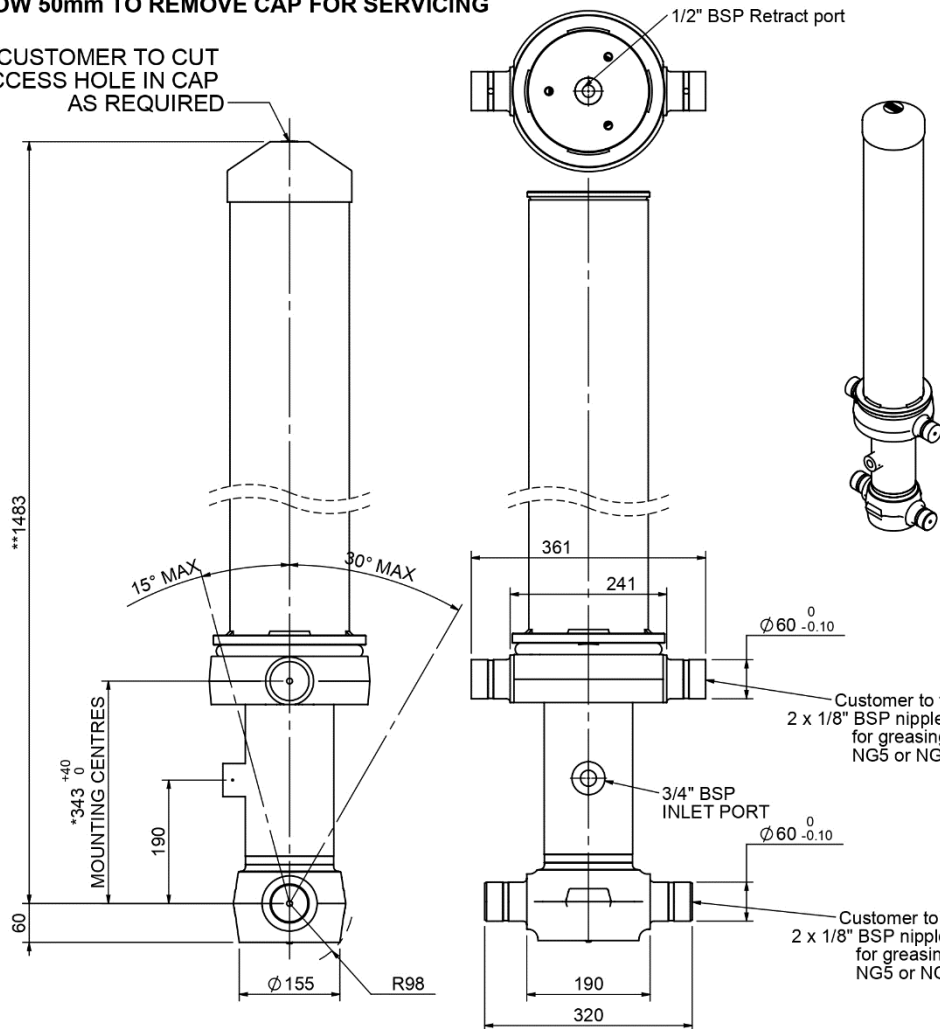


### Cylinder 3 stage with double acting final stage

**\*\*ALLOW 50mm TO REMOVE CAP FOR SERVICING**

CUSTOMER TO CUT ACCESS HOLE IN CAP AS REQUIRED



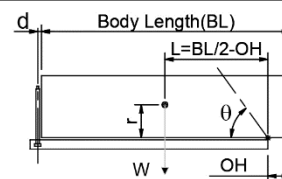
**\*Includes 14mm Pull Out.All Stages Chrome Plated**

### CB110033565B19A11C

**SPECIFICATION TIPPING CAPACITY : 23-33 TONNES\*\*\***

Stage	Diameter	Length	Stroke	Swept Volume
-	-	-	-	-
OUTER COVER	184	1085	-	-
0	136	1425	-	-
1	117	1390	1199	13
2	98	1390	1217	9
3R	87	1390	1149	-
3	79	1390	1149	6
Total (+5/-10)			3565	28
Final stroke reduced by	0	Priming Volume	10	
Cylinder Mass (Kg)	129	Total Volume (Litres)	38	
Maximum Pressure (Bar)	150	Max. first stage thrust	130 KN	

**\*\*\*TIPPING CAPACITY AT WORKING PRESSURE**



BODY LENGTH (BL)						OH
4850		4975		5100		
24	43°	24	42°	23	41°	150
28	46°	27	45°	27	44°	450
		33	48°	32	47°	750

$d = 178; r = 750; \text{Working Pressure } 135 \text{ bar}$

Tipping angle ( $\theta$ )  
Body + payload mass, W (tonne)

Retract force @ Stage 3 = 15.65kN @150bar maximum pressure

#### NOTES

- This cylinder is for lifting purposes only and side load conditions should be avoided
- Cylinder is painted in primer paint to RAL5013
- Refer to [www.edbro.com](http://www.edbro.com) for:-
  - Bracket details
  - Installation instructions that must be observed
  - Correct oil selection
  - An explanation of tipping capacity
- This cylinder is typically for intermittent use in vacuum tanker applications. Refer to Edbro for other uses.