

PB 06758110130



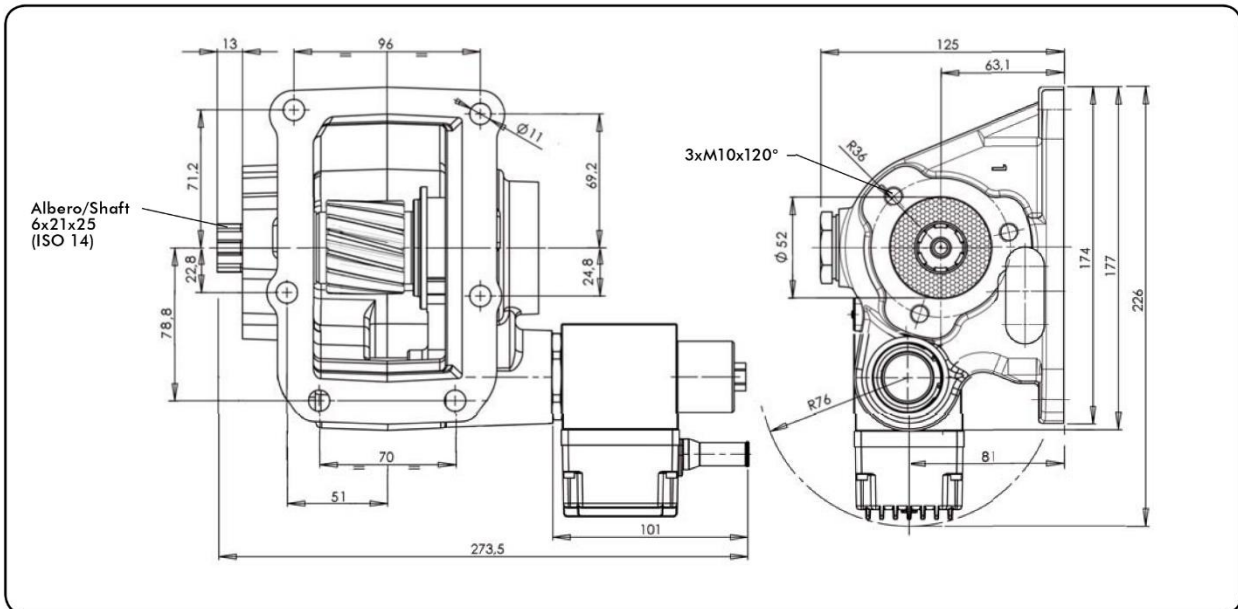
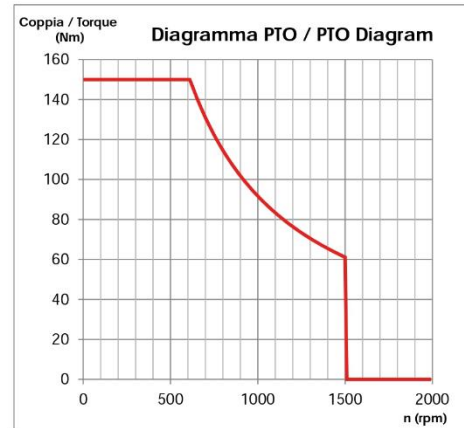
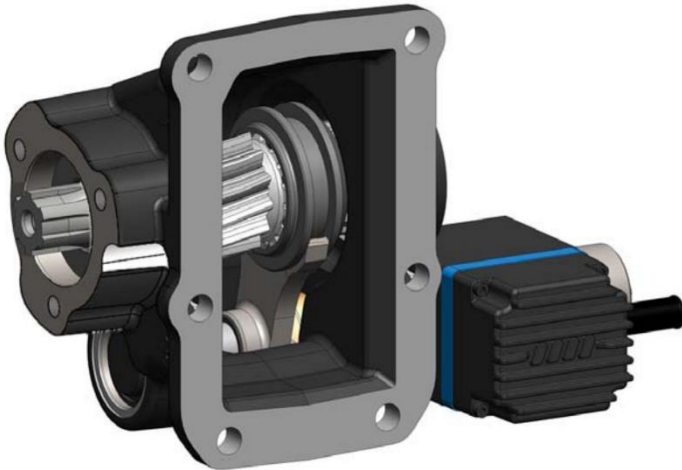
**PRESA DI FORZA A
COMANDO
ELETTROMAGNETICO
ELECTROMAGNETIC CLUTCH
POWER TAKE-OFF**

CODICE PTO
PTO CODE

067-581-10130

CAMBIO
GEARBOX

mitsubishi



Tipo cambio Gearbox	Codice PTO PTO code	Versione Version	Giri pto a 1000 giri motore Pto ratio@1000 eng. rpm	Coppia massima Max torque	Lato montaggio Mounting side	Uscita Output	Rotazione Rotation	Kit di montaggio Mounting kit	Peso Weight Kg
M038-S5	067-581-10130	13	558 rpm	150 Nm	Sx. Left	Post. Rear	Orar. Cw	154-3-3419	8,5
M038-S6			568 rpm						