

PB 05004100176



**PRESA DI FORZA A
COMANDO PNEUMATICO**

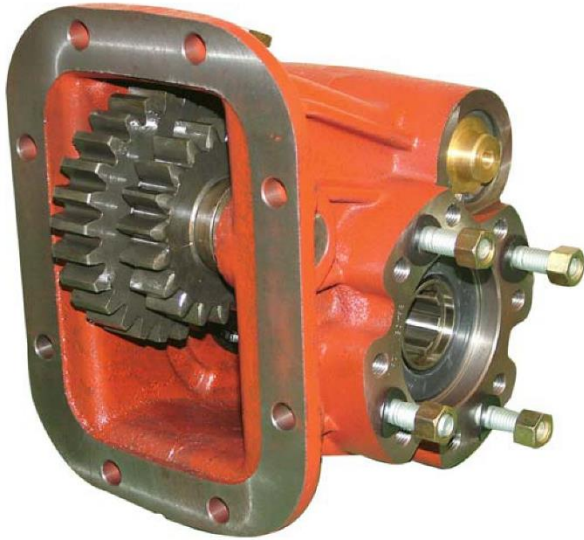
PNEUMATIC CLUTCH POWER TAKE-OFF

CODICE PTO
PTO CODE

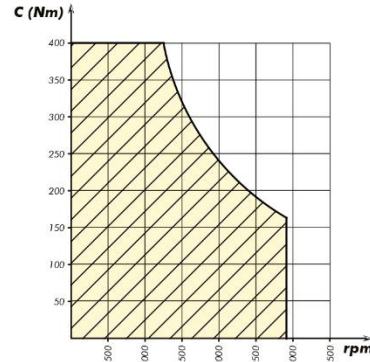
50-41

CAMBIO
GEARBOX

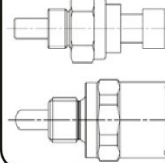
FULLER



**DIAGRAMMA DI UTILIZZO
WORKING CONDITION**



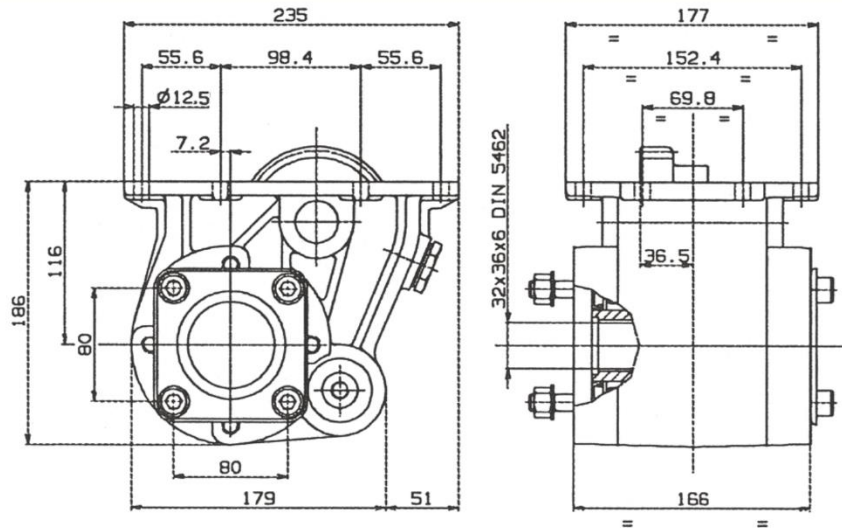
Interruttore segnalazione PTO inserita / PTO pressure signal switch



PACKARD
311-001-00116

DIN 72585
311-001-00205

OPTIONAL
Da ordinare separatamente
To be ordered separately



| Tipo cambio Gearbox | Codice PTO PTO code | Versione Version | Giri pto a 1000 giri motore Pto ratio@1000 eng.rpm | Coppia massima Max torque | Lato montaggio Mounting side | Uscita Output | Rotazione Rotation | Kit di montaggio Mounting kit | Peso Weight |
|--------------------------|------------------------|---------------------|----------------------------------------------------------|---------------------------------|------------------------------------|------------------|-----------------------|----------------------------------------|----------------|
| Vedi indice See index | 50-41-176 | 17 | rpm Vedi indice See index | Nm 400 | Inf. Low side | Post. Rear | Ora. Cw | Vedi indice See index | Kg 20 |