

PB 01007708170



**PRESA DI FORZA A
COMANDO PNEUMATICO**
PNEUMATIC CLUTCH POWER TAKE-OFF

CODICE PTO
PTO CODE **010-77-8170**

CAMBIO
GEARBOX **ZF**

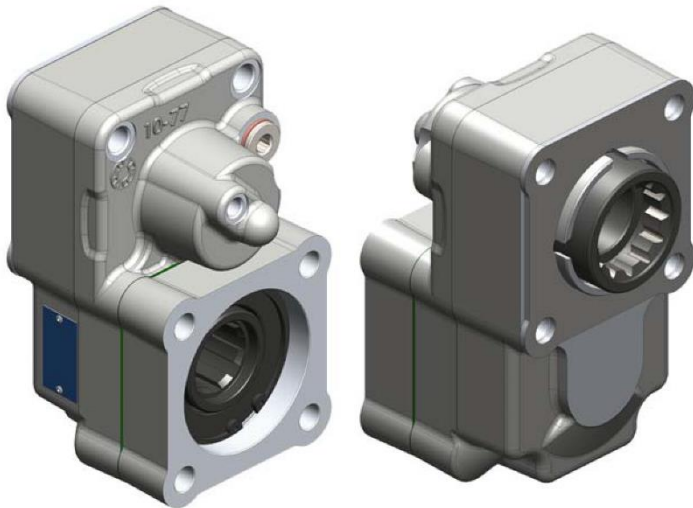
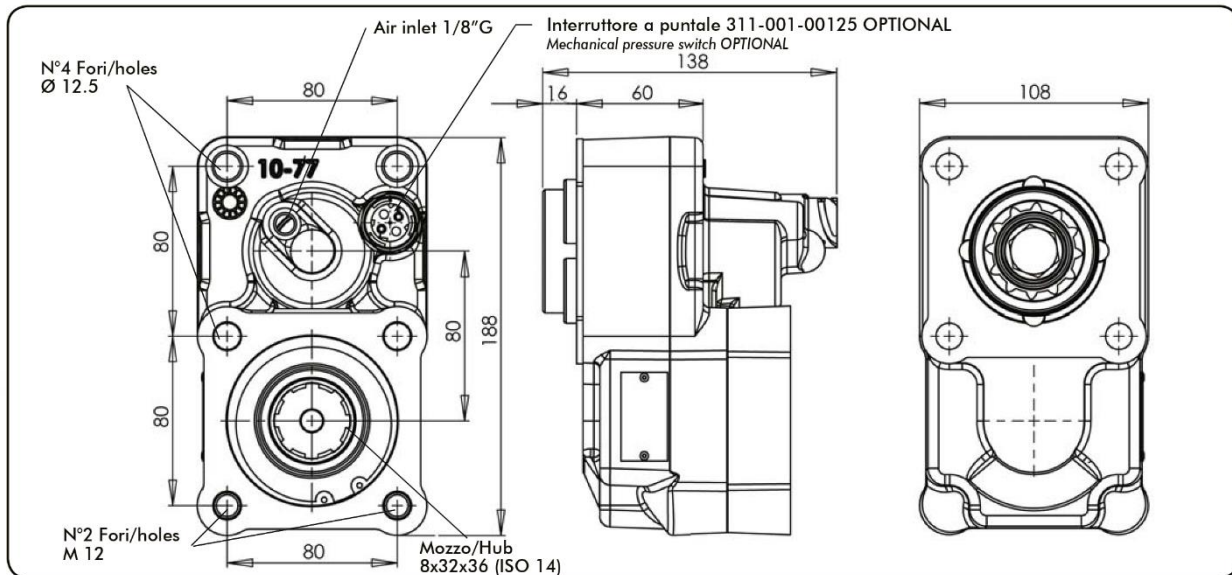
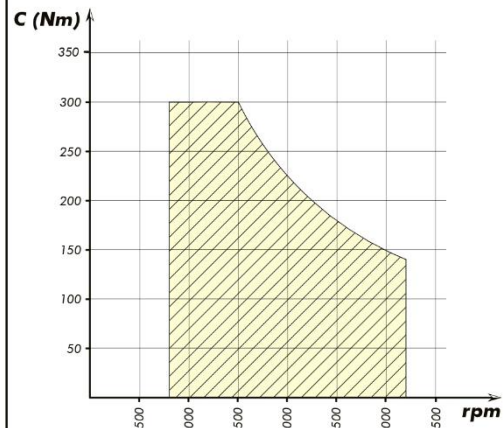


DIAGRAMMA DI UTILIZZO
WORKING CONDITION



Tipo cambio Gearbox	Codice PTO PTO code	Versione Version	Giri pto a 1000 giri motore Pto ratio@1000 eng.rpm	Coppia massima Max torque	Lato montaggio Mounting side	Uscita Output	Rotazione Rotation	Kit di montaggio Mounting kit	Peso Weight
Vedi indice See index	010-77-08170	817	Vedi indice See index rpm	300 Nm	Poster. Rear	Poster. Rear	Ant. Acw	Vedi indice See index	Kg 5,6

Rapporto interno / Internal ratio = 1:1.35