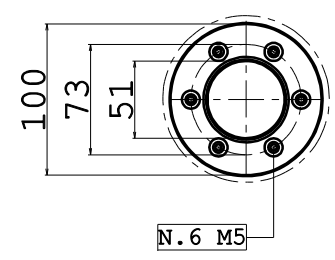
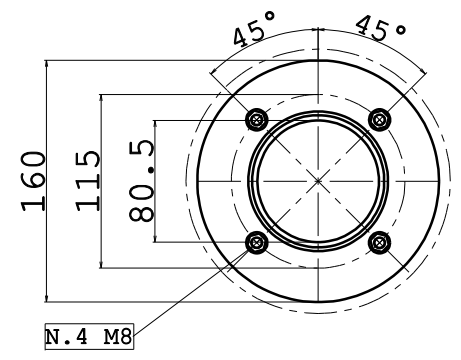


1 OIL CAP FLANGE

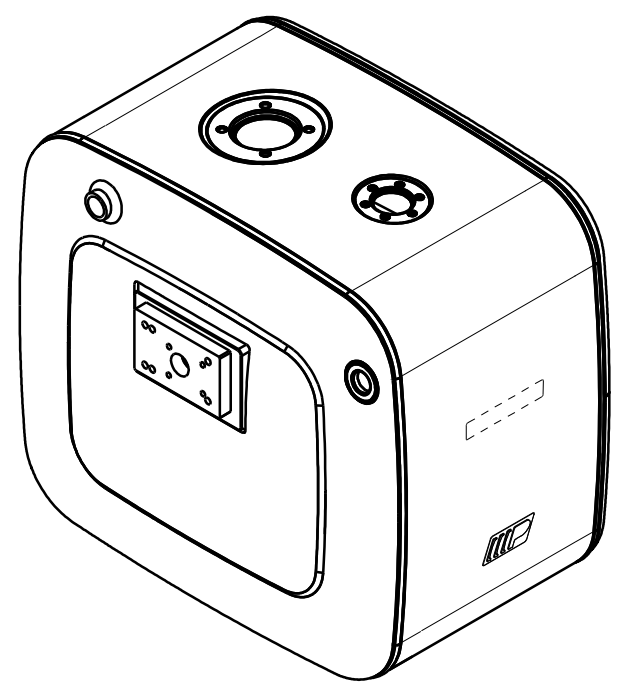


OUT OF SCALE

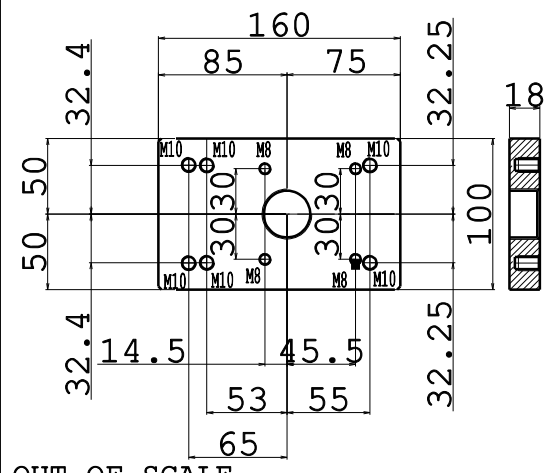
2 RETURN FILTER FLANGE



OUT OF SCALE

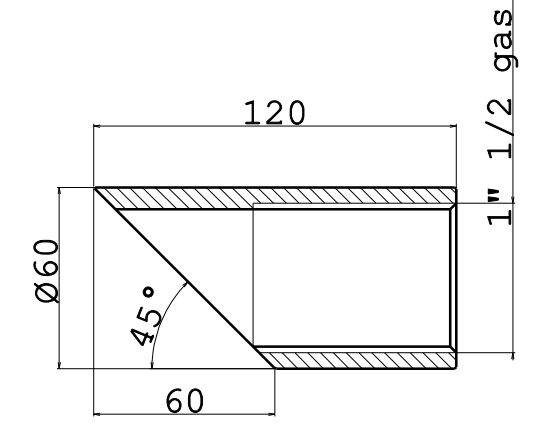


7 RETURN VALVE PLATE



OUT OF SCALE

4 1"1/2 SUCTION ADAPTER



OUT OF SCALE

Plate for
 modular 150 with plane seal no O-Ring version
 modular 200
 modular 250
 Hydrocar DM 160-162-180-250

Rev.	Description	Date	Dis.	Ver.	App.
5	RETURN CONNECTION 1" ON BACK AND FILTER FLANGE ROTATED 45°	09/03/2016	MM	MM	EB
4	BACK TO PLATE REV 0	09/07/2015	MM	AF	EB
3	NEW POSITION MODULAR 150 ON VALVE PLATE (WAS 14,5 NOW 8,5) NEW RETURN 1"1/4 ON BACK	22/06/2015	MM	AF	EB
2	NEW VALVE PLATE, LEVEL INDICATOR AT 125 WAS 65	31/03/2015	MM	AF	EB
1	MODIFY PROPOSAL SAMPLE AFTER MEETING WITH CUSTOMERS	13/03/2015	MM	AF	EB
0	EMISSION	01/02/2013	MM	MM	BM

Tank composition		
Pos.	Denomination	Q.ty
1	OIL CAP FLANGE	1
2	RETURN FILTER FLANGE	1
3	1" LEVEL INDICATOR	1
4	1" 1/2 SUCTION CONNECTION	1
5	1" RETURN CONNECTION	1
6	1" RETURN CONNECTION	1
7	RETURN VALVE PLATE	1

Tank dimensions	
Level indicator capacity	160 Lt
Full capacity	195 Lt
Support weight	22 Kg
Tank weight (F,I,T)	kg (A) kg
Dimension	500x630x706 mm

Part name : Oil tank 200 LT Al/Steel/St.Steel fam. 630x706

Part code : NSO (X) 0200050MFPG

Scale 1:10

Replace the

Replaced by

Material code

(X)=F:Steel DC03A EN 10130

(X)=I:Stainless steel AISI 304 UNI EN 10088

(X)=T:Textured stainless steel. AISI 304 UNI EN 10088

(X)=A:Aluminium EN AW 5754

OWNERSHIP OF THIS DRAWING IS RESERVED BY LAW AND MAY NOT REPRODUCED IN WHOLE OR IN PART WITHOUT PERMISSION OF PADOAN S.R.L.

General tolerances: ISO 2768 V

Drawing format A3

DO NOT MAKE MEASUREMENTS ON DRAWING DO NOT CHANGE WITHOUT TECHNICAL OFFICE AUTHORIZATION

