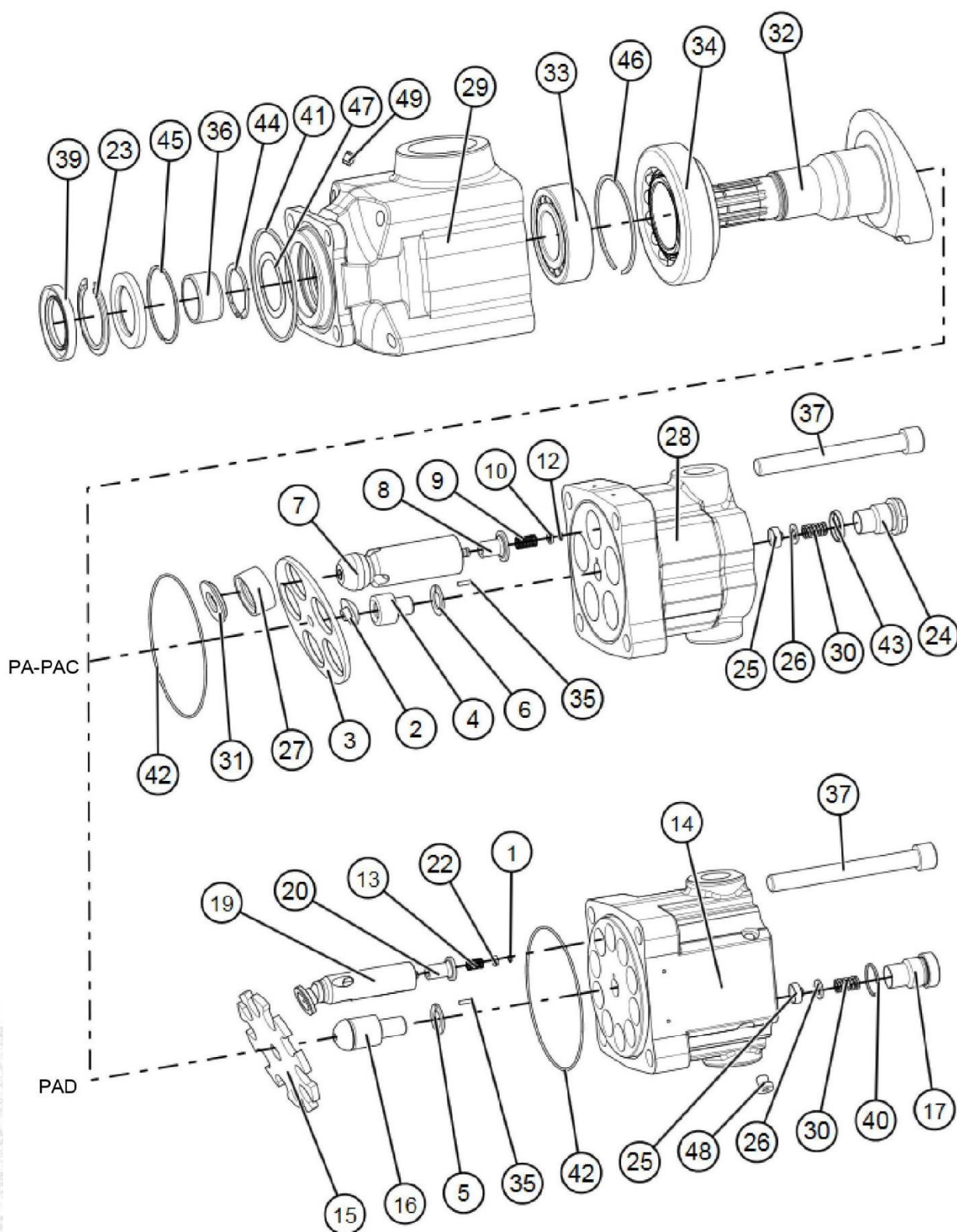


EXPLODED VIEW PA - PAC - PAD pumps:



EV PA-PAC series



Reg	Designation	Qty
1	Jonc / Retainer ring	10
2	Rotule / Ball joint	1
3	Plaque de rappel / Retainer plate	1
4	Support rotule / Ball joint support	1
5	Rondelle / Washer	1
6	Rondelle / Washer	1
7	Piston	3/5/6
8	Clapet aspiration / Inlet poppet	3/5/6
9	Ressort / Spring	3/5/6
10	Rondelle / Washer	3/5/6
12	Jonc / Retainer ring	3/5/6
13	Ressort / Spring	10
14	Corps PAD / PAD body	1
15	Plaque de rappel / Retainer plate	1
16	Rotule / Ball joint	1
17	Bouchon clapet / Valve plug	10
19	Piston PAD	10
20	Clapet aspiration / Inlet poppet	10
22	Rondelle / Washer	10
23	Bague plastique / plastic retainer	1
24	Bouchon clapet / Valve plug	3/5/6
25	Clapet refoulement / Outlet poppet	3/5/6/10
26	Rondelle / Washer	3/5/6/10

Reg	Designation	Qty
27	Plot / Shoes	3/5/6
28	Corps / body	1
29	Carter avant / Front housing	1
30	Ressort / Spring	3/5/6/10
31	Semelle bronze/ Sliding shoes	3/5/6
32	Arbre / Drive shaft	1
33	Roulement / Bearing	1
34	Roulement / Bearing	1
35	Aiguille / Pin	1
36	Bague / Bushing	1
37	Vis / Screw	4
39	Joint d'arbre / Shaft seal	2
40	Joint Aluminium / Aluminum seal	10
41	Joint carré / Square seal	1
42	Joint torique / O-ring	1
43	Joint torique / O-ring	3/5/6
44	Circlips	1
45	Jonc / Retainer ring	1
46	Jonc / Retainer ring	1
47	Rondelle ressort / Spring washer	1
48	Bouchon / Plug	4
49	Carstick	1

